

**Diagnostic Criteria –**

Radial pigment (see Figure 2) on the front surface of the lens of the eye (the anterior lens capsule) is the hallmark of GRPU. The ACVO Genetics Committee recommends that “if radial pigment is present on the anterior lens capsule, the eye should be marked as affected by GRPU even if [additional clinical signs are not present].”

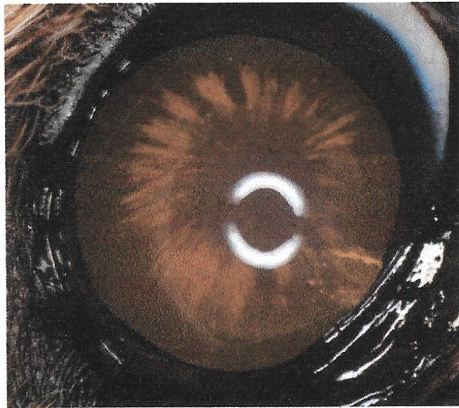


Figure 2: Radial pigment on the anterior lens capsule (from Townsend et al)

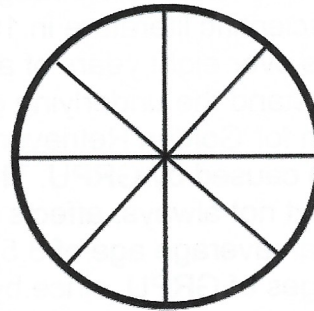


Figure 3: Radial spokes on a wheel.

(For numerous photos depicting clinical signs of GRPU, see Townsend et al.)

It is also critical for examining ophthalmologists to take photos and make sketches of the examination findings to document progression of the disease in each patient and contribute accurate and detailed information for investigators studying this challenging disease.

**Symptoms of Golden Retriever Pigmentary Uveitis**

Severity	Symptoms
<b>Mild</b>	<ul style="list-style-type: none"> <li>radial pigment on the front surface of the lens of the eye</li> <li>+/- excessive pigment on the iris</li> <li>+/- increased protein in the anterior chamber</li> <li>+/- free floating pigmented cells in the anterior chamber</li> <li>+/- low intra-ocular pressure</li> <li>+/- red/irritated conjunctiva</li> </ul>
<b>Moderate</b>	<ul style="list-style-type: none"> <li>radial pigment on the front surface of the lens of the eye</li> <li>varying amounts of excessive pigment on the iris</li> <li>+/- the iris may stick to the front surface of the lens of the eye</li> <li>+/- cataracts</li> </ul>
<b>Severe</b>	<ul style="list-style-type: none"> <li>radial pigment on the front surface of the lens of the eye</li> <li>varying amounts of excessive pigment on the iris</li> <li>fibrinous material in the anterior chamber</li> <li>glaucoma</li> </ul>